

# Bassingbourn Past

Home of historic mystery  
plays

RAF Bassingbourn

Historic Spring

Taxi factory



# Where we are now

- Started in 2017, Helen joined in 2021
- We have a partnership with ArchAngel Architects
- We have all permissions to create a thriving Community Hub
- We are now raising money from the local community with a crowdfunding website
- We have ironed out the small practicalities enabling us to start within three months of raising the money
- We now need to raise the remaining £1M and will create a group of founding trustees from those in the community

# Serving the Community

Support Groups, Companionship, Play, Music & Arts, Celebration, Worship

See calendar on our website for events details



Tots & Toddlers . Messy Church . Home Groups . Community Singing Group . Music Concerts  
Men's Group . Women's Group . Worship for all . School Community events  
Hosting Village Markets . Art Exhibitions . Celebration events .



# Partnerships

Helping us reach our people

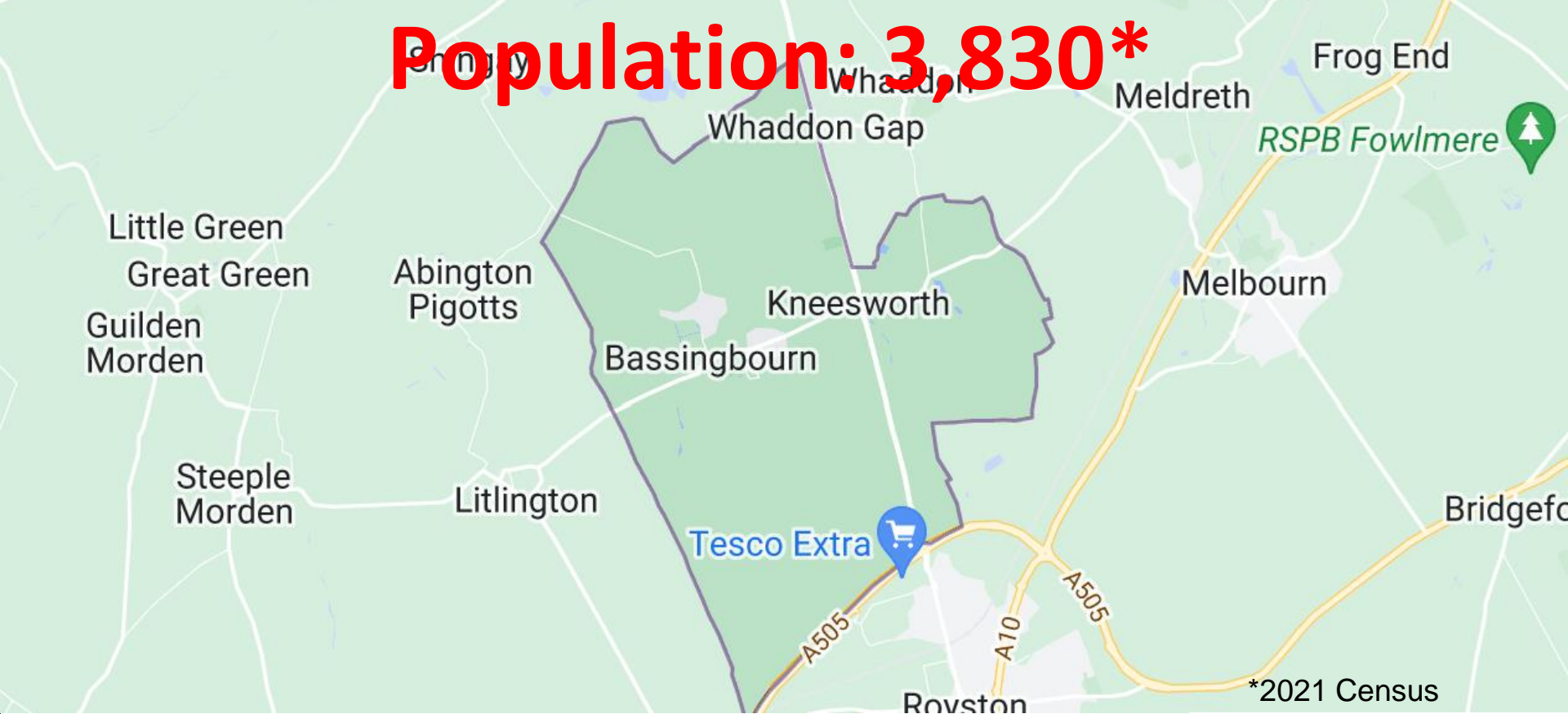
**Bassingbourn Primary & Village College | Kneesworth House Hospital | Local Business | Diocese**



THE PARISH CHURCH OF  
**St PETER & St PAUL**  
BASSINGBOURN

*A wellspring of hope for all*

**Population: 3,830\***



**No large café to relax with friends!**

**\*2021 Bassingbourn & Whaddon**





# Cafe & Chapel

Serving the Community

Commercially Viable | Community Focus | Social Conscience



# Our Vision

- A community hub with flexible space to serve the varying needs of our growing community
- A programme of events and workshops with community partners
- Ethical, Enriching, Sustainable
- **Blueprint for parish church development**



## THE VISION

A greener, more flexible church fit for the 21st century and better suited to serve the needs of its community

North and south aisle roof coverings to be renewed interne-coated stainless steel and incorporating additional insulation

New level stone-flagged floor with under-floor heating linked to air-source heat pump

Carved column bases incorporating leaf mouldings fully revealed

Gallery for choir and musicians, with meeting rooms

Area under gallery either open to main worship space or closed off with glass screen to form creche or meeting room

Historic pews retained in both north and south aisles





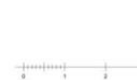
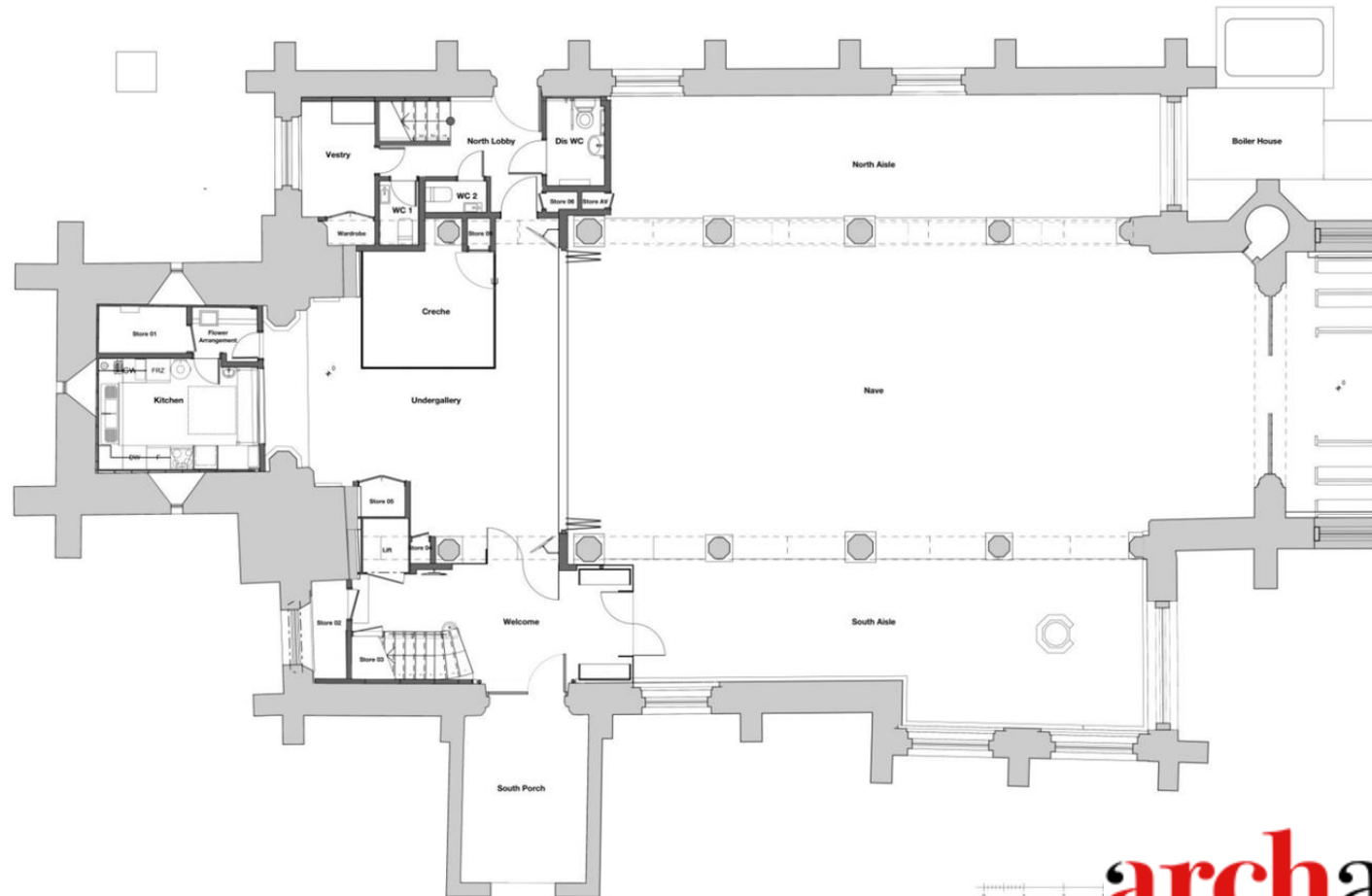
## Flexible

Adaptable space with access for  
buggies, young children, wide  
access for disabled, fitness, dance

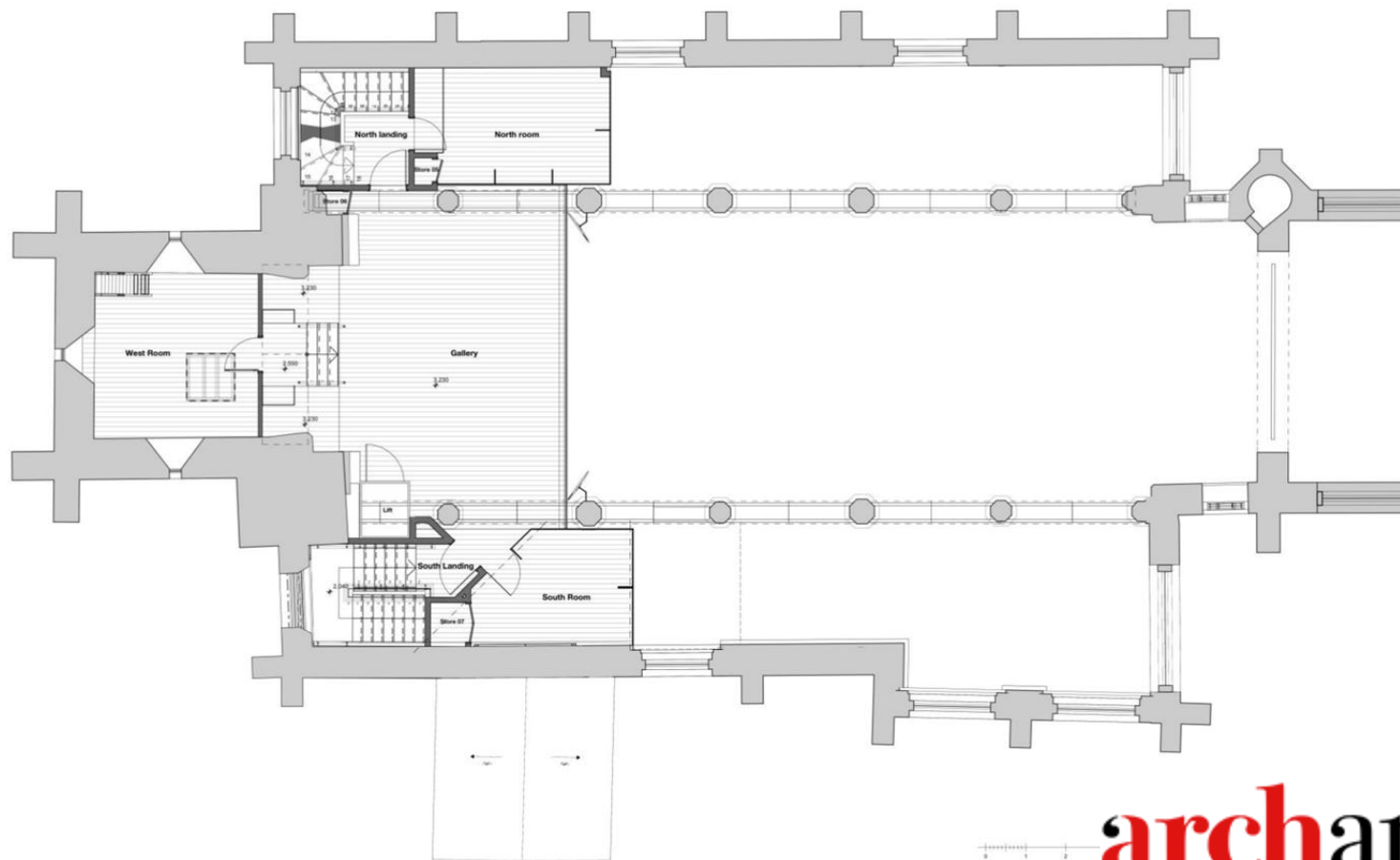
## Facilities

Kitchen, toilets, baby changing area,  
meeting space, worship space,  
performance space

Architect's Plan – Ground Floor



Architect's Plan – First Floor





# The Future

Collaboration Opportunities  
Pilot Workshops Enrichment Initiatives

Bassingbourn  
Charities  
“Mayhem”



Chiltern Music Therapy



# Initiatives

Music as Therapy - all age

A mental health choir for all and carers/families

Tea Dances for the retired/elderly

Local History - Memphis Belle, Miracle Plays - Exhibition and performance space

Arts Cafe Sessions - creativity to promote community and mental wellbeing

Skills Cafe Sessions - jobs, life-skills, budgeting, relationships

Network Hub - entrepreneurs, work from home community

Pre-School nursery development

Holiday Club helping families to work - with Forest School element

Supporting local business and charities - awareness, partnerships, training

## Case Study

Hot Numbers Shepreth  
People will come...

# Franchise



Proven success in Cambridgeshire area

Music and community ethos / fit

Opportunity for brand enrichment - “coffee with a conscience”

Access community services and support

Training and employment opportunities



THE PARISH CHURCH OF  
**St PETER & St PAUL**  
BASSINGBOURN

*A wellspring of hope for all*





Away from motorway, in a 'barn', next to a lawnmower shop

Full capacity from early morning every day of the week

Demand = destination...they got it right

## One of the most common questions asked by customers is why did you choose **this location** for your roastery?

The answer is why not? What often scares people when opening a business is not having any proven trade, footfall or demand for a product or service, which is of course completely justifiable. The difference here is that we didn't need to justify demand for our new site as it had a purpose as a **roastery** for our Cambridge cafes, **barista training** and supply for **wholesale**, a storehouse for **Kandula Tea** we recently and proudly acquired and an artisan bakery for the mountain of sourdough and sweet treats that is devoured in our cafes on a daily basis. Oh and I nearly forgot a third café and kitchen that might just become busy if we get our coffee and **brunch offering** right.

## Case Study

# Michaelhouse Cafe & Centre

Adapting a church for the 21st century

# A cafe, community centre and arts space with meeting rooms in central Cambridge with cafe space franchise

Aesthetic fit - historic church building

Enrichment ethos - working with community

Nourishing the mind, body and soul

## UPCOMING EXHIBITIONS

**13th – 26th June:** DIVINING RHYTHM  
Mixed media abstraction in painting and sculpture

**3rd – 17th July:** CANTAB ART SOCIETY

**27th – 2nd July:** CAMBRIDGE OPEN STUDIOS  
A show-case of 44 different artists work from COS

**14th – 27th November:** ANGLIA LEARNING TRUST  
Exhibition of students' work

Exhibitions – See full guide

### EXHIBITION

## Divining Rhythm

Mixed media abstract  
paintings and sculpture  
exploring landscapes of  
memory and imagination

Ruthie Martin  
Robyn Reeves  
Maggie Smith

**13th to 26th June 2022**

Michaelhouse Café,  
St Michael's Church,  
Trinity Street, Cambridge

Opening hours:  
Monday-Saturday 9am-5pm  
Sunday 12pm-4pm





Case study Michaelhouse





Case study Michaelhouse



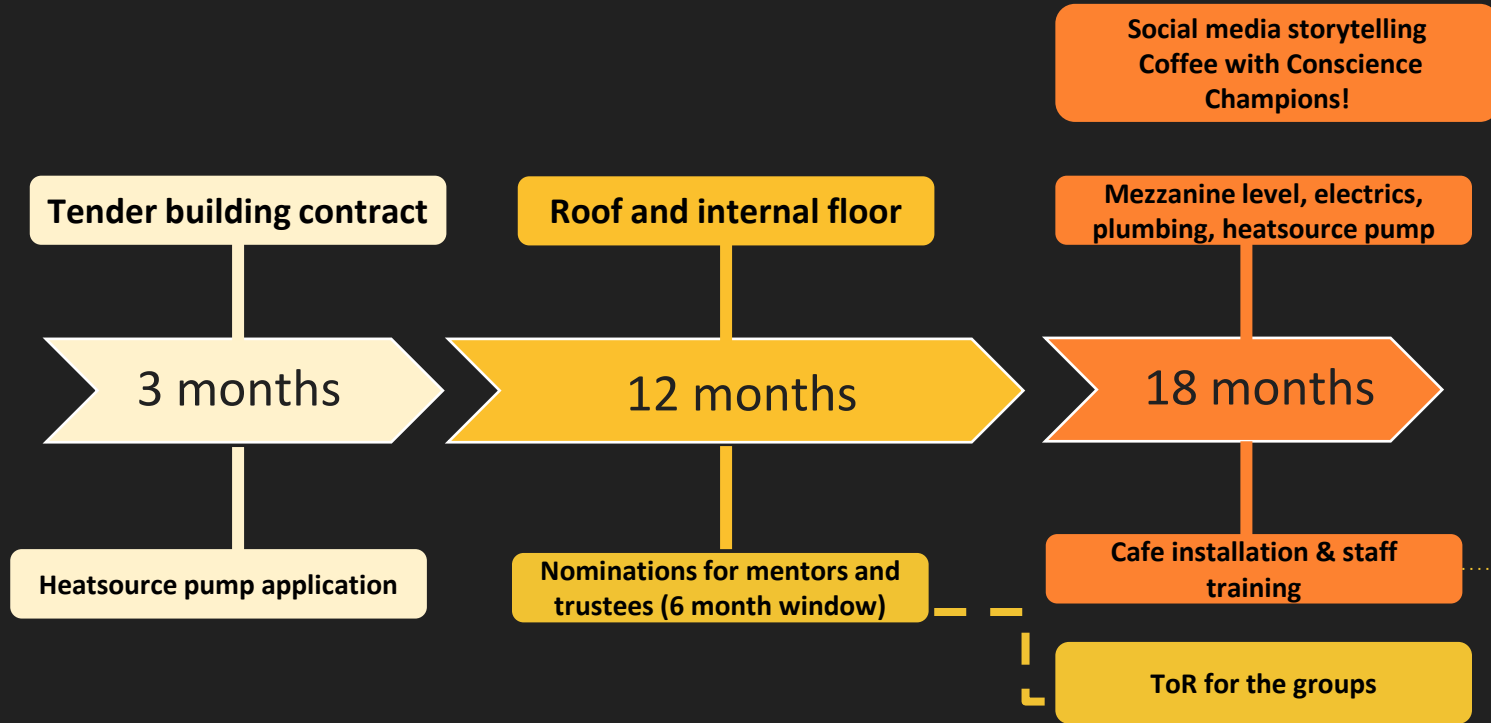
Case study Michaelhouse





Case study Michaelhouse

# Our Timeline





# Our Timeline



# Funding

- We envisage our community café as a meeting space for all in the village.
- We want to partner with you
- Just like joining a gym we propose Gold ,Silver, and Bronze membership of the community café.
- Like other crowd funding projects we expect the local community to profit from our success.
- We want Bassingbourn to have a large, thriving, social hub in its most ancient and beautiful building, restoring the church to its former glory.

With your help we can make it happen...



## The Reverend Helen Orr

Former choral scholar and theology graduate in church restoration history from Magdalene College, Cambridge.

As a pioneer minister at Michaelhouse she developed the idea of cafe church. She began to see how the Church of England could be using their church buildings in a much more community centred way whilst losing none of their spiritual integrity.

Her vision is to look at how we can be church to our communities in 21st century and beyond.

As a church historian she has looked with interest on how churches have evolved and changed over the centuries and how they can continue to evolve with your help in the twenty-first century .

Thirteenth century Bassingbourn had both theatre and festivals in its large central nave.

The project seeks to restore the vision and the purpose for which Bassingbourn and local parish churches were originally intended; as 'community spaces' for everyone - a Wellspring of Hope for all...

# Meet the Team

